

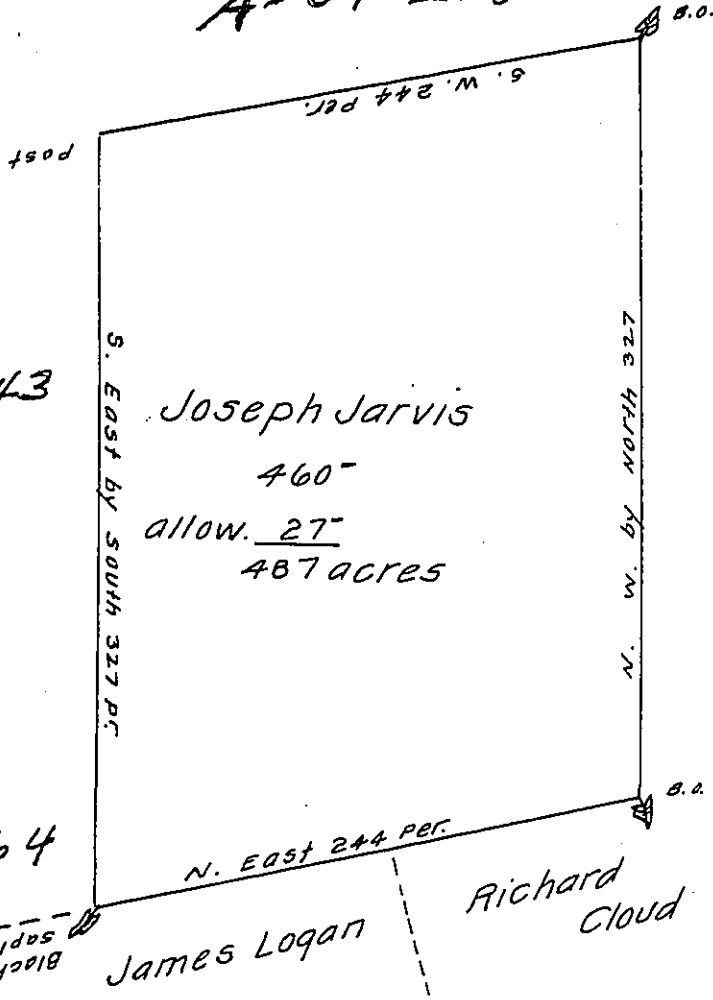
A-64-210

Fig. 243

C-155-107

C-34-15

C-121-64



By Virtue of a Warrant from ye Com<sup>es</sup>. bearing date the 30<sup>th</sup> of ye 4<sup>th</sup> mo. 1711 (obl.) for the laying out to Joseph Jarvis 650 acres of Land in Right of John Marsh; Purchase £ 1 Survey'd to Joseph Jarvis a Tract of Land on a Branch of pequea Creek in the County of Chester.

Begining at a Corner Marked Black Oak Saplin- standing in a line of James Logan's Land thence North East by the same Land & ye Land of Richard Cloud 244 perches to another Black Oak, thence North West by North by a line of Marked Trees 327 per. to a Black oak, thence South west by a line of Marked Trees 244 perches to a post, thence South East by South 327 per. by a line of Marked Trees to ye place of begining. Containing 460 acres with Allowance of six per Cent.

Survey'd the 13 of May 1715.

By Isaac Taylor. —

IN TESTIMONY that the above is a copy of the original remaining on file in the Department of Internal Affairs of Pennsylvania, made conformably to an Act of Assembly approved the 16th day of February, 1833, I have hereunto set my Hand and caused the Seal of said Department to be affixed at Harrisburg, this eleventh day of March 1910.

*Henry Howell*  
Secretary of Internal Affairs.